

Installations across the Globe:

India



Cipla Ltd.
Cadila Healthcare Ltd.
Ranbaxy Laboratories Ltd.
Lupin Laboratories Ltd.
Inventia Healthcare Ltd.
Mylan Laboratories Ltd.
Dr. Reddy's Laboratories Ltd.
Hetro Drugs Ltd.
Sun Pharmaceutical Industries Ltd.
Glenmark Pharmaceuticals Ltd.
Alkem Laboratories
and many more...

International



USA



BRAZIL



CYPRUS



GHANA



NIGERIA



KENYA



UGANDA



TANZANIA



TUNISIA



SUDAN



BANGLADESH



PAKISTAN



CHINA



VIETNAM



MALAYSIA



UAE



SYRIA



JORDAN



SAUDI ARABIA



IRAQ



IRAN



RUSSIA



NEW ZEALAND

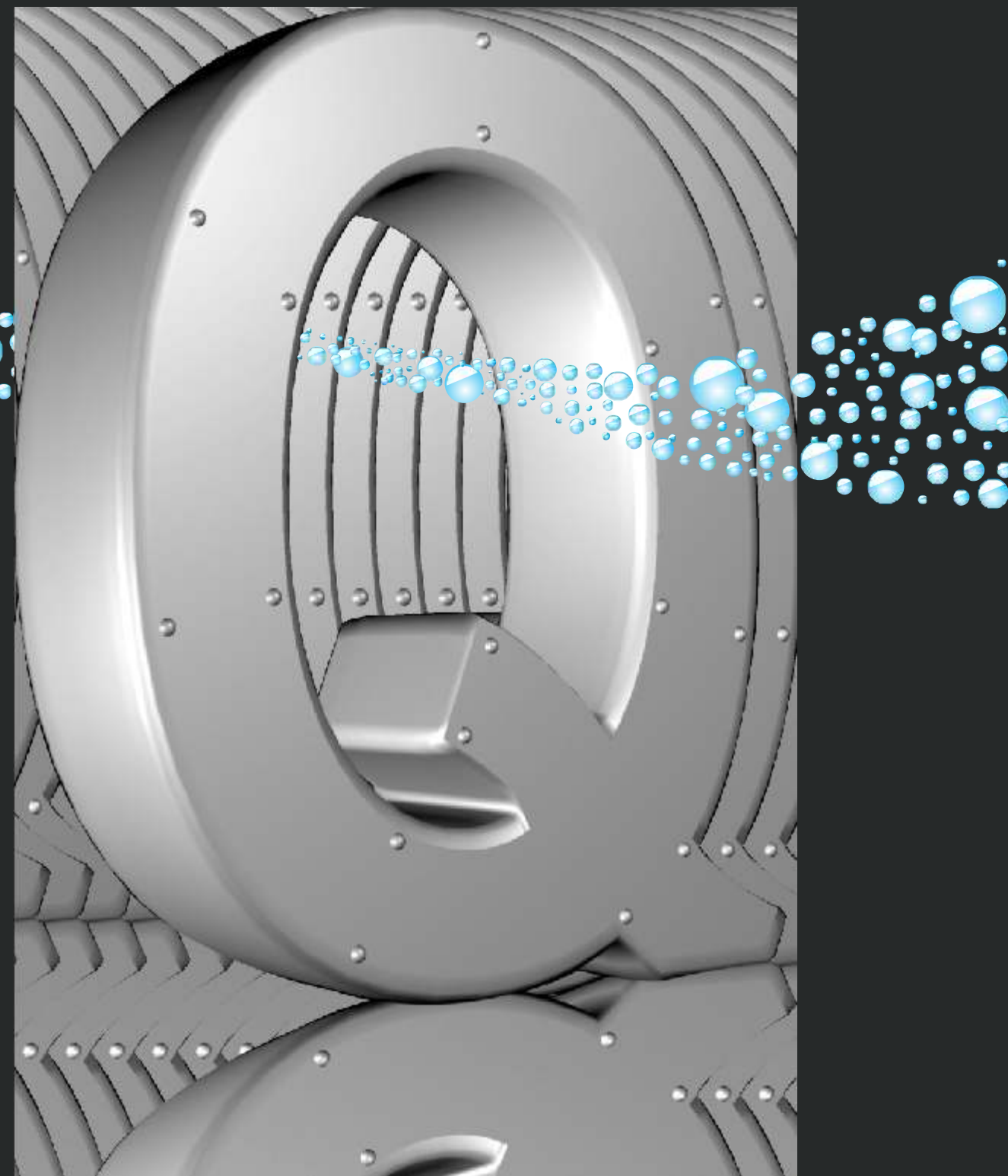


AUSTRALIA

and many more...



Quality, no matter what.



anish pharma equip Pvt. Limited

G - 68, MIDC Ambad, Nashik 422 010, Maharashtra. INDIA.

T: +(91 253) 2381831/ 2380337 F: +(91 253) 2380903

M: +(91) 9822268801 / 9881470643 / 9403697028 E: info@anishpharma.com

Quality is never an accident; it is always the result of high intention, sincere effort, intelligent direction and skillful execution; it represents the wise choice of many alternatives.

Briefly speaking...

Founded in 1992 with the basic motto of catering to the needs of pharmaceutical & cosmetic industry, Anish Pharma today is a well respected name not only in the above mentioned industries but also in related industries like bulk drugs, chemicals, foods, distillation, dyestuffs etc.

Focus on changing technology, utmost respect for quality and customer delight as the ultimate goal, helped us develop loyal customer base in varied markets across the globe.

Today, Anish Pharma has solutions for Pelletisation, Granulation, Ointments, Cream and Liquids, that covers practically every product forms in these industries.



APCG

Anish Particle Coater Granulator



ATSG

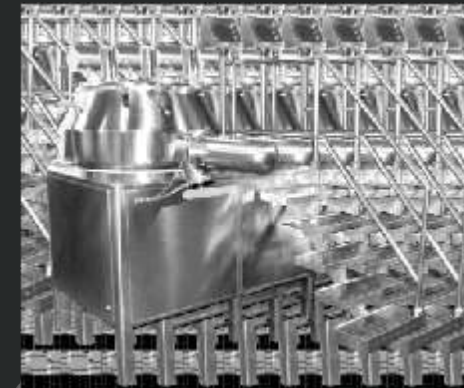
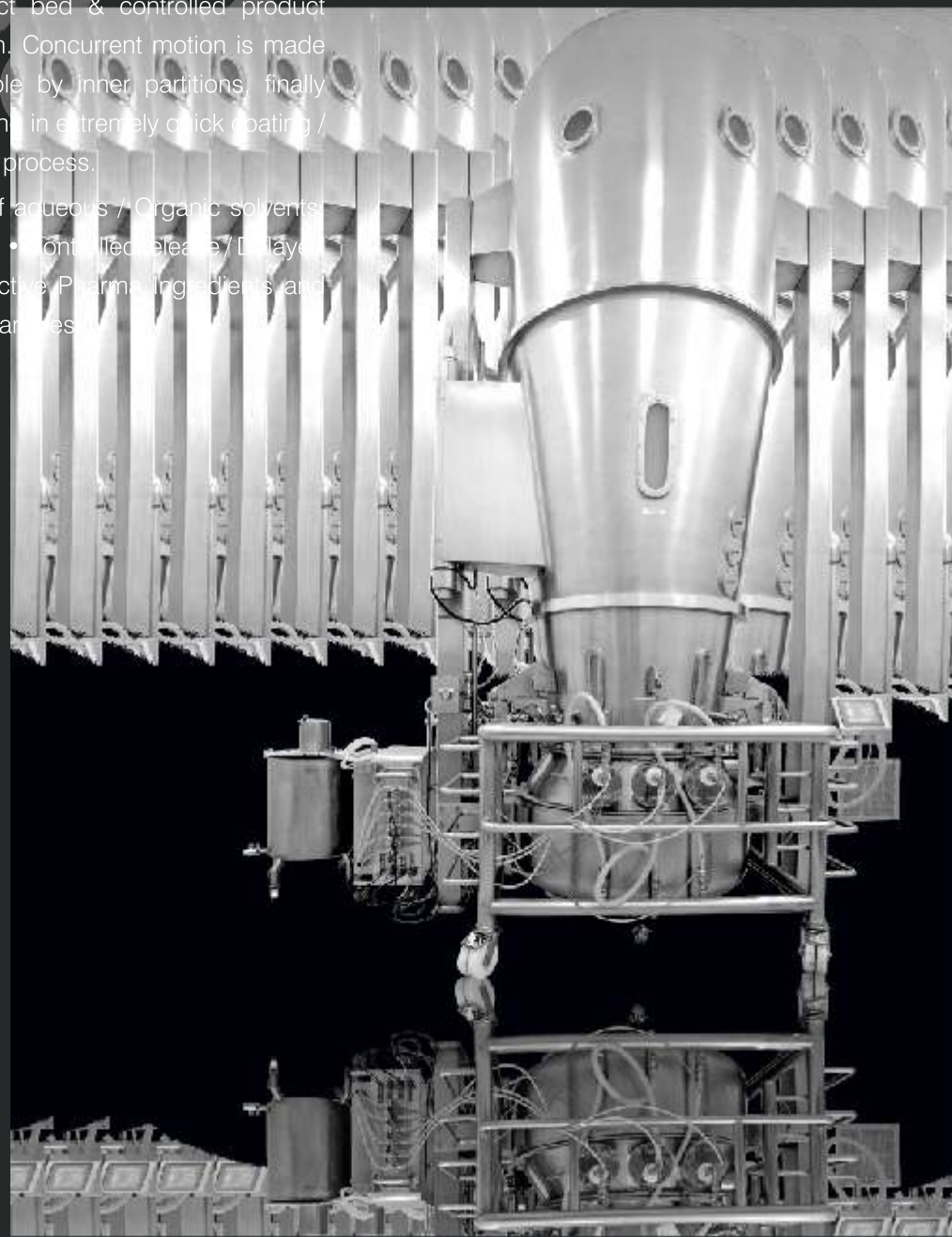
Anish Top Spray Granulator



The Bottom Spray method makes it possible to gain excellent results in pellet as well as Powder / Particle Coating. The combination of Spray Nozzle positioned directly in the product bed & controlled product motion. Concurrent motion is made possible by inner partitions, finally resulting in extremely quick coating / drying process.

Coating of aqueous / Organic solvents

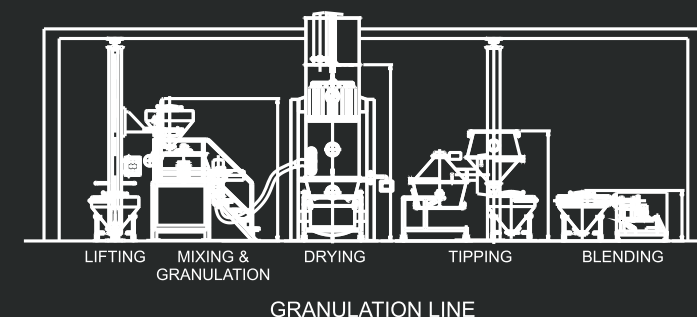
- Dispersions • Enteric Coating • Controlled release / Delayed release
- Layering of API - Active Pharmaceutical Ingredients and
- Fine particle coating • Nano particles



High Shear Mixer Granulator

High Shear Agglomeration by means of either top or bottom driven mixing blades in a close container is a well known processing option in pharmaceutical industry.

Agglomeration in the Fluid bed system is a modern & sophisticated method of creating granules from different powders by using liquid as a binder media. The liquid to be sprayed can be either aqueous - Water / Organic solvents or a binder dissolved solution. The moist granulates are dried & if required, cooled. This results in relatively low mechanical forces in the fluid bed so incredibly soluble granules in water. The granule properties can be controlled over a wide range by setting different parameters like Bulk density, Porosity, Size, etc.

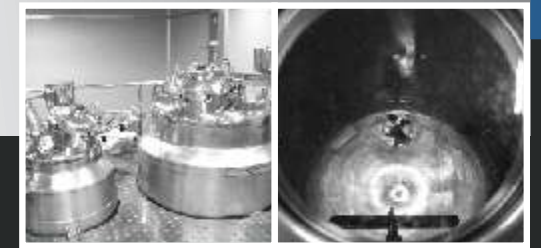


OAC

Ointment And Cream



LIQUID



This is an advanced system for manufacturing Emulsions / Cream with varied viscosity range, having major applications in Pharmaceuticals, Herbal, Cosmetics sectors.

With a wide experience, Anish Pharma Equip have developed a system which addresses and attains the basic but crucial requirements of the market.

Advantages:

- Robust & Compact Construction
- User-friendly & flexible Process parameter settings
- Variable shear force adjustment
- Easy upgradations with latest trends
- Bottom entry drive with modular construction
- Easy cleanability
- Easy to assemble & dismantle
- Jacketed vessels with heating/cooling facilitating absolute temperature control
- Follows SHE policy
- PLC based touch screen HMI with SCADA software
- "W" shaped anchor with stationary baffles that result in SEMICONTRA motion facilitating manufacturing of critical products.

Applications

Pharmaceuticals Sector: Liquid Orals, Syrups & Suspensions.

Bio Pharmaceuticals sector: Sterile Solutions, Aerosols, IV Fluids, Serums, Vaccines, Human Insulin, Ampoules.

Technical Highlights:

- Zero dead leg design
- Bottom mounted magnetic mixer with required speed variations
- Bottom mounted Shaft along with Mechanical seal
- Load cells for accurate weight measurement
- Sterile flange connections for top dish nozzles facilitates CIP, SIP operations
- PH & Temperature sensing through sanitary Knuckle port on vessel shell.

